

Edinboro VFD Job 35001
The following pictures show the progress this week.









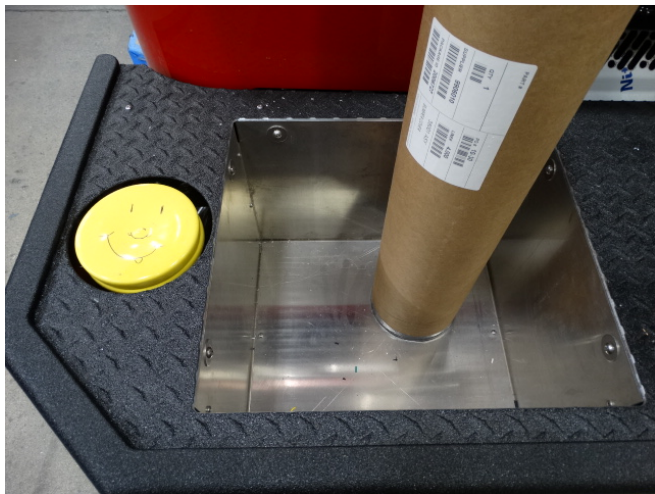




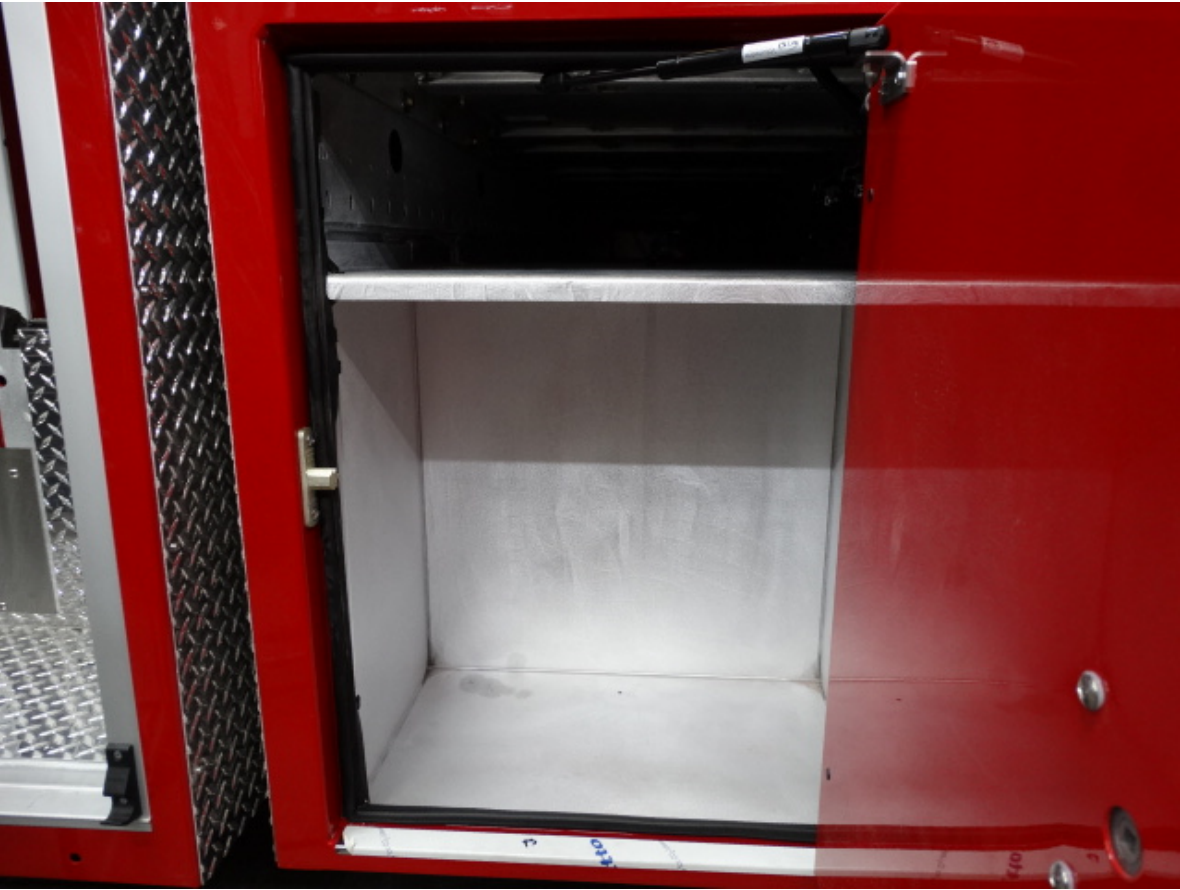


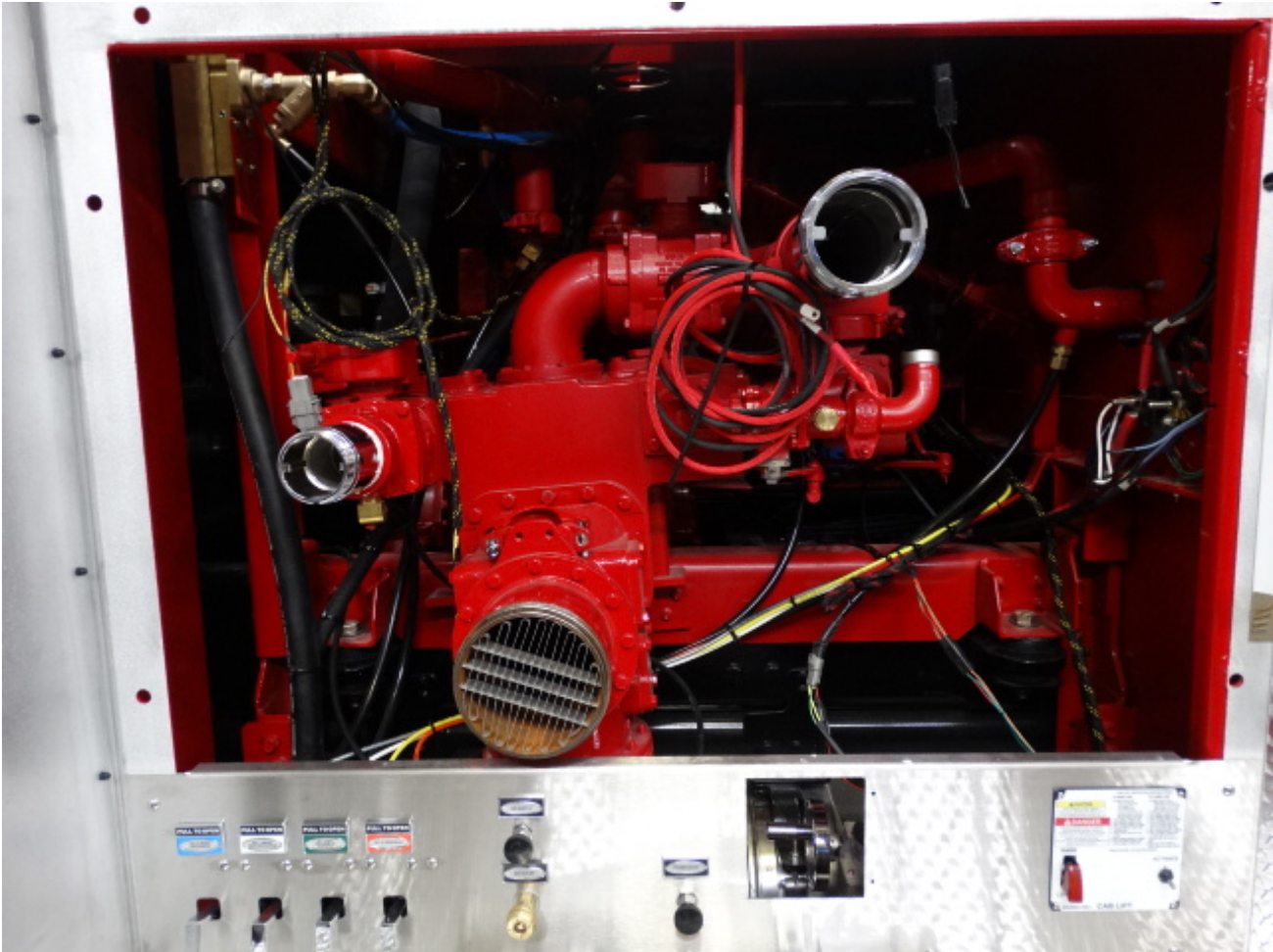
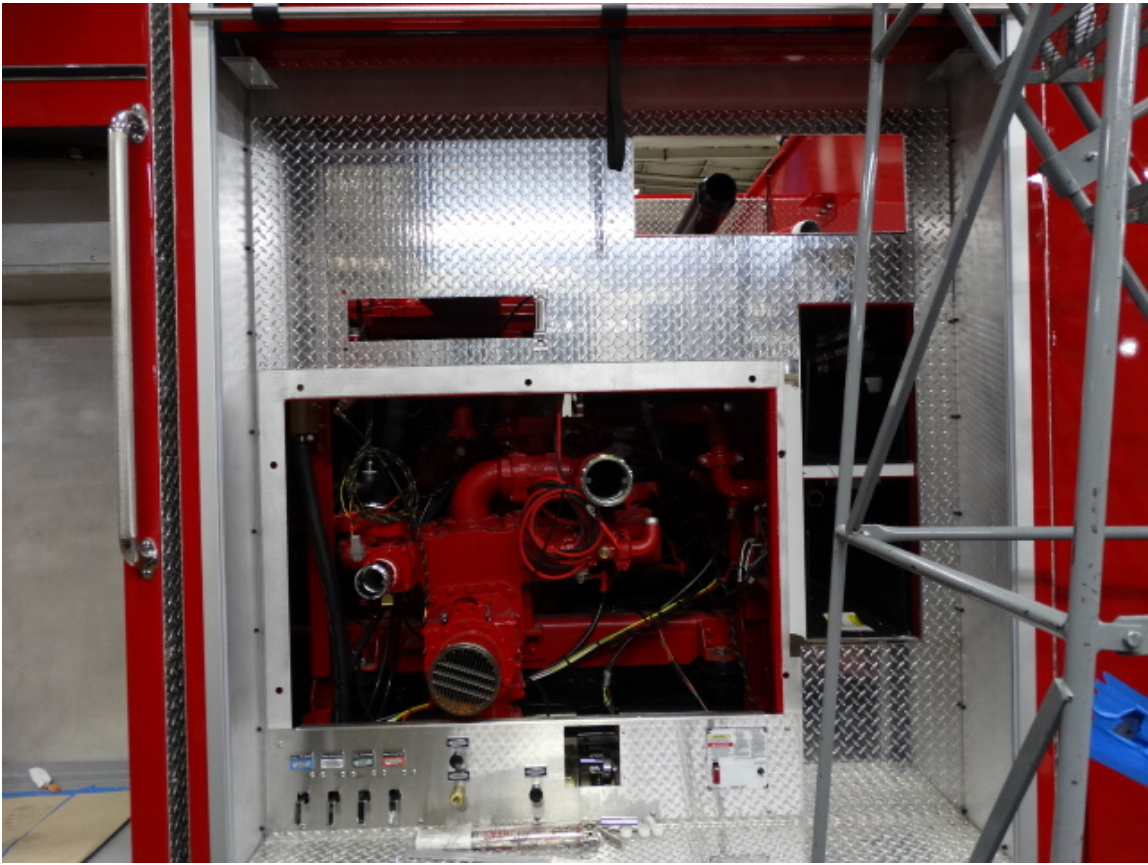












CAB LIFT OPERATING INSTRUCTIONS

CAUTION

CHECK OVERHEAD AREA, BUMPER COMPONENTS, MIRRORS, AND SIGHT RODS FOR CLEARANCE BEFORE TILTING CAB.

DANGER

CAB STAY ARM MUST BE IN THE SUPPORT POSITION BEFORE MOVING UNDER OR WORKING ON THE CAB IN THE TILT POSITION. NEVER WORK ON THE CAB WITHOUT STAY ARM IN THE SUPPORT POSITION. FAILURE TO FOLLOW PROPER PROCEDURES CAN RESULT IN INJURY OR DEATH.

TO RAISE CAB:

1. Prepare cab to tilt:
Park on level surface.
Turn engine OFF.
Set parking brake.
Secure loose items in cab.
No obstructions in lift path.
Fold up steps on rear seat.
2. Turn battery switch to ON.
3. Turn ignition switch to ON.
4. Move control switch to RAISE.
5. Press ACTIVATE switch until cab fully lifts.
6. Stowing safety Stay-Arm into pocket.
7. Move control switch to LOWER.
8. Press ACTIVATE switch until cab is resting on Stay-Arms.

Manual Override: See Operation Manual

TO LOWER CAB:

1. Prepare cab to lower:
Check that no persons or obstructions are in lift path.
Fold up steps on rear seat.
2. Parking brake must be set.
3. Turn battery switch to ON.
4. Turn ignition switch to ON.
5. Move control switch to RAISE.
6. Press ACTIVATE switch until cab is off safety Stay-Arm.
7. Slow and secure Stay-Arm.
8. Move control switch to LOWER.
9. Press ACTIVATE switch until cab fully lowers and for 5 seconds after cab comes to rest.
10. Make sure cab is latched down before operating vehicle.

RAISE



ACTIVATE



4992-0001 CAB LIFT



